



# Ice Racing Division

Welcome to the  
2023 / 2024 Annual  
Members Meeting!





# Ice Racing Division

## Agenda

1. Opening remarks
2. 2023 Season Review
  - Highs and Lows of 2023
3. 2024 Season
  - 2024 Race Schedule
  - Event Schedule
  - Rule Updates
  - Spec Tire for Street Stud Classes
  - Lights
  - Promotional efforts / advertising
4. Topics from the floor





# Ice Racing Division

## Opening Remarks

- Thank you to all the volunteers and participants that helped make 2023 a successful season
- Thank you to Brad Elkins and Larry Laycock for their efforts
- Thank you to the Organizers
- Thank you to the Kins Club of Minden





# Ice Racing Division

## 2023 Season Review





# Ice Racing Division

## • 2023

- 6 Race weekends completed
- Average entries down
- Increase in cost for track maintenance
- Warmer weather creating difficulties in maintaining track
- February meeting held by Tom Prentice
- March general meeting held by CASC
- Annual Banquet and Awards held April 8, 2023 – Thank you Elaine Willis for organizing.
- Display as part of CASC-OR @ Drive Festival





# Ice Racing Division

- 2023
- Congratulations to all our participants and class Winners!





# Ice Racing Division

## 2024 Season





# Ice Racing Division

## • 2024 Race Schedule

- 6 race schedule – starting January 20, 2024
  - January 20/21 BEMC
  - January 27/28 BARC
  - February 3/4 PMSC
  - February 10/11 TLMC
  - February 17/18 TAC
  - February 24/25 DAC
  - RAIN Date – March 2/3 *if required*
- Tech weekend January 13/14
- PLEASE REGISTER ONLINE







# Ice Racing Division

## • 2024 Event Schedule (Tentative)

- Motorama - March 8, 9 & 10 2024
- Ice Race Banquet and Awards - TBD
- Drive Festival - September 8, 9 & 10 2024





# Ice Racing Division

- **2024 Rules Update**

- Minor tweaks and updates
- Main changes
  - Temporary License for previously licensed racers
  - Spec Tire for Street Stud Classes





# Ice Racing Division

- **2024 Spec Tire for Street Stud Classes**

- Meeting held February 2023 – Concern expressed regarding the current Street Studs and changing climate conditions creating difficulty in building and maintaining track. As speeds increase safety could become an issue!
- Meeting held March 2023 – Decided to move to a single spec tire for the Street Stud classes
- Promote door to door racing
- Increase in competition
- Through research and discussion with the Organizers it was decided to go to the Nokian Tyres Hakkapeliitta 10
  - Readily available through several commercial outlets
  - Nokian is a well-known / established company
  - Nokian specializes in Winter tires.
  - The Hakkapeliitta 10 uses the latest in technology
    - Centre studs improve grip for accelerating and braking
    - Shoulder stud areas maximize grip during turning

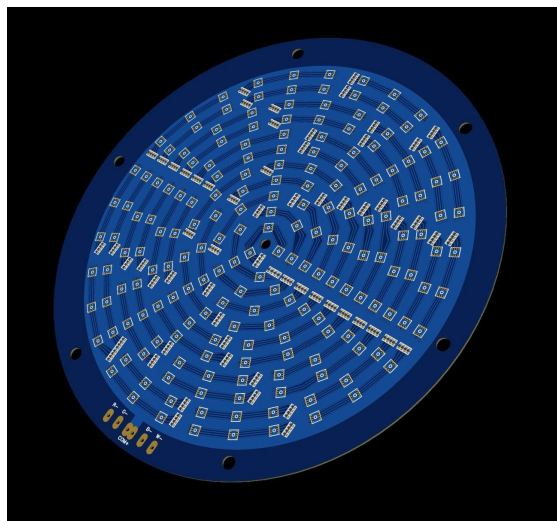




# Ice Racing Division

## • 2024 Lights Update

- Issues with lights during 2023
- Served their purpose – 20+ years of service
- New lights being built





# Ice Racing Division

## • 2024 Promotional efforts / advertising

- Planning community TV episode
- Hoping to broadcast on local radio
- Talking to Barrie FM station
- Local Print Media
- REV TV





# Ice Racing Division

- Questions?
- Open to the floor





# Ice Racing Division

- Thank You!
- We are looking forward to a successful 2024 season!

Tire	Dia	Circum	Studs	Studs per foot	Width	Width in "	Studs per square "
185/65 R 15 92T XL	24.5	76.9	212	33.1	185	7.3	0.378953
195/65 R 15 95T XL	25.0	78.5	218	33.3	195	7.7	0.362301
195/55 R 16 91T XL	24.4	76.6	212	33.2	195	7.7	0.360993
205/55 R 16 94T XL	24.9	78.2	220	33.8	205	8.1	0.349186
205/60 R 16 96T XL	25.7	80.7	224	33.3	205	8.1	0.344468
205/55 R 17 95T XL	25.9	81.3	224	33.1	205	8.1	0.341808
205/50 R 17 93T XL	25.1	78.8	216	32.9	205	8.1	0.340105
215/55 R 16 97T XL	24.4	76.6	220	34.5	215	8.5	0.339768
215/60 R 16 99T XL	26.1	82.0	226	33.1	215	8.5	0.326300
225/45 R 18 95T XL	25.0	78.5	226	34.5	225	8.8	0.325517
215/50 R 17 95T XL	25.5	80.1	220	33.0	215	8.5	0.325111
215/55 R 17 98T XL	26.3	82.6	226	32.8	215	8.5	0.323819
205/65 R 16 95T	26.5	83.2	226	32.6	215	8.5	0.321375
175/65 R 15 88T XL	24.0	75.4	164	26.1	175	6.9	0.316360
225/50 R 18 99T XL	26.9	84.5	234	33.2	225	8.8	0.313234
225/40 R 18 92T XL	25.1	78.8	218	33.2	225	8.8	0.312743
225/55 R 16 99T XL	25.8	81.0	224	33.2	225	8.8	0.312632
225/50 R 17 98T XL	25.9	81.3	224	33.1	225	8.8	0.311425
225/45 R 17 94T XL	25.0	78.5	216	33.0	225	8.8	0.311113
235/45 R 18 98T XL	25.4	79.8	228	34.3	235	9.2	0.309472
185/60 R 15 88T XL	23.7	74.4	164	26.4	185	7.3	0.303048
235/40 R 19 96T XL	26.4	82.9	230	33.3	235	9.2	0.300361
245/45 R 18 100T XL	26.6	83.5	232	33.3	245	9.6	0.288422
235/45 R 17 97T XL	26.3	82.6	220	32.0	235	9.2	0.288394
245/40 R 19 98T XL	26.7	83.8	232	33.2	245	9.6	0.287341
245/40 R 20 99T XL	27.7	87.0	240	33.1	245	9.6	0.286519
245/45 R 17 99T XL	25.7	80.7	222	33.0	245	9.6	0.285655
245/40 R 18 97T XL	25.7	80.7	222	33.0	245	9.6	0.285655
225/55 R 17 101T XL	26.8	84.2	204	29.1	225	8.8	0.274094
245/45 R 19 102T XL	27.7	87.0	210	29.0	245	9.6	0.250704
255/40 R 19 100T XL	27.0	84.8	208	29.4	255	10.0	0.244764